

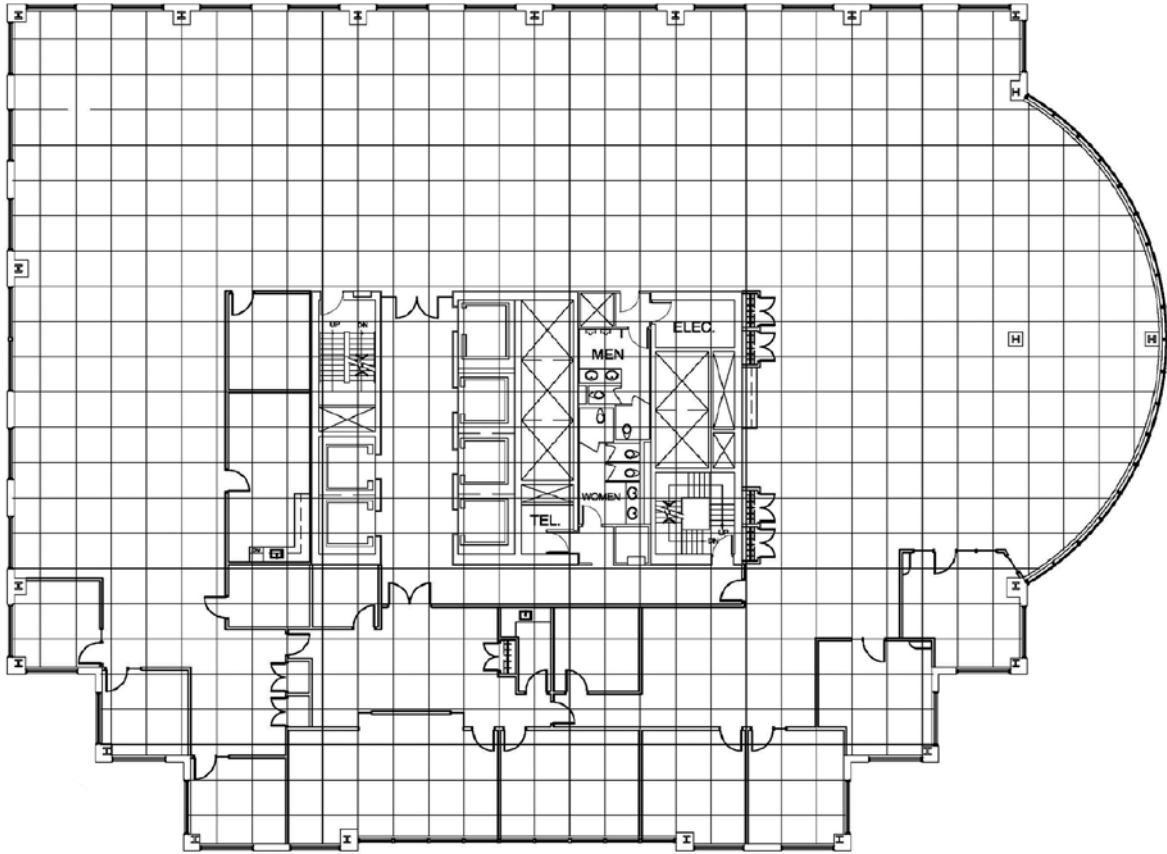
201

Suite

1200

15,535

square feet



KEY PLAN

Full floor plan consists of 7 offices, 2 board rooms, open area for work stations, kitchen/staff room and storage area.
Beautiful panoramic views of the city!

Gail Auriti

Broker, Leasing Manager

T | (204) 988.1069 E | gauriti@harvard.ca